

# sewoo



## POS SYSTEM PRODUCT GUIDE BOOK

POS System  
Scanner  
Cash Drawer

Your Complete Hardware  
Solution Partner,  
SEWOO



# YOUR COMPLETE HARDWARE SOLUTION PARTNER

## RETAIL

SEWOO Printing Solutions are widely used in various distribution sectors such as department stores, hypermarkets, and speciality retail stores for printing purposes including receipts, price tags (labels), and coupons.

## TOURISM, DINING

SEWOO Printing Solutions are widely used in various sectors of the tourism and food service industry, including hotels, restaurants, and kitchens, for printing purposes such as receipts, kitchen printers, order labels, and ingredient labels.

## TRANSPORTATION, LOGISTIC

SEWOO Printing Solutions are widely used in various sectors of the transportation and logistics industry, including warehouses, logistics centers, railway stations, and airports, for printing purposes such as parcel and logistics delivery receipts, in-flight duty-free receipts, baggage labels, notices, and airline bus terminal tickets.

## HEALTHCARE

SEWOO Printing Solutions are widely used in various sectors of the healthcare industry, including hospitals, pharmacies, and medical research laboratories, for printing purposes such as patient information, examination results, symptoms, and prescription labels.

## MANUFACTURING

SEWOO Printing Solutions are widely used in various sectors of the manufacturing industry, including warehouses, factories, and production sites, for printing purposes such as invoices and receipts, inventory management labels, product information labels, packaging labels, incoming/management labels, and component tag printing.

## PUBLIC SECTOR

SEWOO Printing Solutions are widely used in various sectors of the public domain, including public institutions, police stations, military, and libraries, for printing purposes such as parking and traffic violation receipts/labels, and book location tags.

## ON-SITE SERVICES

SEWOO Printing Solutions are widely used in various sectors of on-site services, including delivery shops and field service businesses, for printing purposes such as delivery receipts, on-site sales, and service receipts.



# CONTENTS



## POS System

Traditional Product  
Foldable Products

## Scanner

Wired Scanner  
Wireless Scanner  
Wearable Scanner  
OCR Scanner

## Cash Drawer

S330E / S415H

# POS System

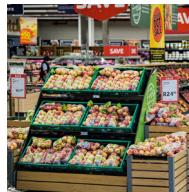
SEWOO POS System offer a great opportunity to attract big customers.

SEWOO POS System offer high performance and adaptability.

To satisfy service demands, retail and hospitality industry require high-performance POS systems with flexible mount installation options to suit diverse application environments. Take advantage of the opportunity to big customers at POS system with SEWOO products. The latest POS system makes sure of its superior configurability, scalability, and power.

## Application

High-performance POS system for a wide range of retail environments



## Key feature



### 15" POS System, NBP-150

- Larger and clearer screen
- 1366 x 768 / 1920 x 1080P (optional)
- Display : 180 degrees vertical, high brightness
- A+ Grade touch screen
- Scratch-resistant and wear-resistant high-definition picture quality



### Smart and Portable POS System, NBP-150/156 Flip

- Easy design to detach
- 7mm ultra-thin screen
- High performance processor
- Foldable and rotatable design
- All-aluminum design available in three colors
- Available customer display with just one cable
- Fanless operation with waved back cover design

Foldable Products



NBP-156FLIP



NBP-150FLIP

PRODUCT SPEC

SYSTEM CONFIGURATION	CPU	Windows : J6412 Quad core 2.0G, Intel N95: Quad core 1.7GHz- 3.4Ghz, i3-12th, i5-12th Android : RK3568 Quad core Cortex-A55 up to 2.0GHz
	OS	Windows : Windows 10 IoT Enterprise testing verison Android : Android 11
	RAM	Windows : DDR4 4GB / 8GB / 16GB Android : 2GB RAM
	SSD	Windows : m.2 128GB / 256GB / 512GB Android : 32GB / 128GB ROM
	RESOLUTION	1366*768 P
	LCD	15.6 inch LED
	TOUCH	15.6 inch capacitive touch screen
	CUSTOMER DISPLAY	2*20 VFD/ 11.6 inch customer display (1366*768, no touch)
	POWER	12V/5A
	STRUCTURAL PARAMETERS	WEIGHT
PACKING SIZE		1pcs: 43*18.5*42cm
INTERFACE		Windows : J6412: RS232(2) ,USB(5), RJ45(1), HDMI(1), RJ11(2), HP_JACK(1), Only EDP (only for 2nd display)(1) N95: RS232(2), USB(5), RJ45(1), HDMI(1), RJ11(1) , Only EDP (only for 2nd display)(1), HP_JACK(1) Android : RK3568 : UART7(com) : (2), RJ45(Ethernet) (1), USB : (5), TF_CARD(tf card) : (1), SIM card : (1), PHONE JACK : (1), MICROPHONE : (1), RJ11 : (1) i3-12th, i5-12th: IO panel is same. RS232(2) ,USB(5), RJ45(1), HDMI(1), RJ11(2), HP_JACK(1), Only EDP(only for 2nd display) (1)
ACCESSORIES	OPTIONAL Windows : MSR, Speaker*1, WiFi+BT Android : MSR, Speaker*1	
ENVIRONMENTAL PARAMETER	WORKING TEMPERATURE	0°C - 40°C
	WORKING HUMIDITY	20% - 80%
	STORAGE TEMPERATURE	-20°C - 60°C
	STORAGE HUMIDITY	20% - 80%

Windows : J6412: RS232(2) ,USB(5), RJ45(1), HDMI(1), RJ11(2), HP_JACK(1), Only EDP (only for 2nd display)(1) N95: RS232(2), USB(5), RJ45(1), HDMI(1), RJ11(1) , Only EDP (only for 2nd display)(1), HP_JACK(1) Android : RK3568 : UART7(com) : (2), RJ45(Ethernet) (1), USB : (5), TF_CARD(tf card) : (1), SIM card : (1), PHONE JACK : (1), MICROPHONE : (1), RJ11 : (1) i3-12th, i5-12th: IO panel is same. RS232(2) ,USB(5), RJ45(1), HDMI(1), RJ11(2), HP_JACK(1), Only EDP(only for 2nd display) (1)
Windows : MSR, Speaker*1, WiFi+BT Android : MSR, Speaker*1
0°C - 40°C
20% - 80%
-20°C - 60°C
20% - 80%

Windows : J6412: RS232(2) ,USB(5), RJ45(1), HDMI(1), RJ11(2), HP_JACK(1), Only EDP (only for 2nd display)(1) N95: RS232(2), USB(5), RJ45(1), HDMI(1), RJ11(1), Only EDP (only for 2nd display)(1), HP_JACK(1) i3-12th, i5-12th: IO panel is same. RS232(2) ,USB(5), RJ45(1), HDMI(1), RJ11(2), HP_JACK(1), Only EDP(only for 2nd display) (1)
Windows : MSR, Speaker*1, WiFi+BT
0°C - 40°C
20% - 80%
-20°C - 60°C
20% - 80%

Traditional Product



NBP-150

PRODUCT SPEC

SYSTEM CONFIGURATION	CPU	- Intel J4125 : Intel® Celeron® J4125, Quad Core 2.0Ghz [Fanless] - Intel J6412 : Intel® Celeron® J6412, Quad Core 2.0Ghz [Fanless] - Intel i3 : Intel® Core® i3-5th/ 10th/ 11th - Intel i5 : Intel® Core® i5-5th/ 10th/ 11th
	OS	Supporting System : Windows 10 IoT Enterprise
	MAIN	Memory : DDR4 4GB (Option: 8GB) Storage : 2.5" SATA 128G SSD (Option: 256G/ 512G)
	LCD	15" TFT LED
	RESOLUTION	1024 x 768
	CUSTOMER DISPLAY	VFD 2 line x 20 characters / LCD 2 line x 20 characters / LED Display characters : Single line display Support 8 number only
	TOUCH SCREEN	15" Bezel-Free True-Flat Protective Capacitive Touch Screen
	SECONDARY DISPLAY	10.1" IPS LCD, 15" TFT LCD
	POWER	- DC-IN : Input AC 100-240V / 50-60hz, Output DC 12V/ 5A
	STRUCTURAL PARAMETERS	INTERFACE
SIZE		220mm x 190mm x 350mm (WxDxH)
WEIGHT		7kg
CERTIFICATIONS	RELIABILITY	CE, RoHS, FCC
ACCESSORIES	OPTIONAL	- MSR : ISO 1,2,3 Tracks - Button : Dallas Key RS232 I/F - Finger Reader
	ENVIRONMENTAL PARAMETER	WORKING TEMPERATURE
WORKING HUMIDITY	20% - 80%	
STORAGE TEMPERATURE	-20°C - 60°C	
STORAGE HUMIDITY	20% - 80%	

Supporting System : Windows 10 IoT Enterprise
Memory : DDR4 4GB (Option: 8GB) Storage : 2.5" SATA 128G SSD (Option: 256G/ 512G)
15" TFT LED
1024 x 768
VFD 2 line x 20 characters / LCD 2 line x 20 characters / LED Display characters : Single line display Support 8 number only
15" Bezel-Free True-Flat Protective Capacitive Touch Screen
10.1" IPS LCD, 15" TFT LCD
- DC-IN : Input AC 100-240V / 50-60hz, Output DC 12V/ 5A
- Intel J4125 : VGA (1), RS232 (2), RJ45 (1), USB (6), RJ11 (1), HDMI(1) - Intel J6412 : VGA (1), RS232 (3), RJ45 (1), USB (6), RJ11 (1)or VGA(1), HDMI (1), RS232(2), RJ45(1), USB(6), RJ11(1) - Intel i3/i5 : VGA (1), RS232 (2), RJ45 (1), USB (6), HDMI (1) - Audio : 1 * Mic-in, 1 * Line-out
220mm x 190mm x 350mm (WxDxH)
7kg
CE, RoHS, FCC
- MSR : ISO 1,2,3 Tracks - Button : Dallas Key RS232 I/F - Finger Reader
0°C - 40°C
20% - 80%
-20°C - 60°C
20% - 80%

# Scanner

SEWOO Scanners streamline workflows with reliable performance and enhanced productivity.

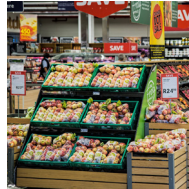
## SEWOO Scanners offer fast performance and quality imaging.

To satisfy service demands, retail and hospitality industry require high-performance POS systems with flexible mount installation options to suit diverse application environments. Take advantage of the opportunity to big customers at POS system with SEWOO products. The latest POS system makes sure of its superior configurability, scalability, and power.

### Application



Store



Supermarkets



Restaurant



Pharmacy

#### 1D/2D Wired (Pistol type)



**NBS-8250 (with Stand)**  
**NBS-8200 (w/o Stand)**

#### 1D/2D Omni Wired (Desktop type)



**NBS-8202S**

### PRODUCT SPEC

DATA CAPTURE	LIGHT SOURCE	
	IMAGE SIZE	
	RESOLUTION	
	SCANNING SPEED	
	DEPTH OF SCAN FIELD	
	PRINT CONTRAST	
	INDICATOR	
	SCAN MODE	
	SCAN ANGLE	
	PHYSICAL	INTERFACE
WIRELESS TRANSMISSION DISTANCE		
MATERIALS		
DIMENSION (LxWxH)		
WEIGHT		
VOLTAGE		
BATTERY		
TFT COLOR SCREEN		
CPU		
FLASH MEMORY		
ENVIRONMENTAL	AMBIENT LIGHT	
	WORKING CURRENT	
	STAND-BY CURRENT	
	TEMPERATURE (OPERATING)	
	TEMPERATURE (STORAGE)	
	HUMIDITY	
	DECODING CAPABILITY	1D
		2D
	DROP	
	IP	
ACCESSORY	STANDARD	

	Red light, LED
	640 × 480 pixels
	> 5mil
	30 fps/s
	6-25cm(Code39,15mil), 6-25cm(UPC/EAN,15mil)
	15%
	Buzzer, LED
	Manual & Automatic & Continuous
	Roll:360° Skew:±50°, Pitch:±50°
	USB-HID, USB-VCP, RS232
	-
	ABS+PC
	171 x 66 x 86 mm
	150g
	DC 5V ± 0.5V
	-
	-
	ARM 32
	-
	0 to 10000LUX Illumination
	230mA
	150mA
	-10°C to 55°C
	-20°C to 80°C
	5% to 95%
	Codabar, Code11, Code39, Code32, Interleaved 2 of 5, Industrial 2 of 5, Matrix 2 of 5, Code93, Code128, GS1-128, UPC-A, UPC-E, EAN 8, EAN 13, GS1 DataBar, RSS14, GS1 DataBar Limited, GS1 DataBar Expanded, etc.
	PDF417, Micro PDF417, QR Code, Micro QR, Data Matrix, Aztec Code
	1.5M
	IP54
	USB Cable

	Red LED (Lighting) Color Temperature 650nm LED
	1280× 800 pixels
	> 3mil
	60fps
	5-280mm(13mil UPC/EAN 100%,PCS=90%)
	15%
	Tone & Volume adjustable
	Continuous
	Deflection 360° Inclination ±65° Rotation ±60°
	USB-HID, USB-VCP, RS232
	-
	ABS+PC
	98 x 98 x152 mm
	350g (Inclu.cable)
	DC 5V ± 0.5V
	-
	-
	ARM 32
	-
	0-5000Lux (fluorescence), 0~100,000 Lux (sunlight)
	<450mA
	<236mA
	-10°C ~ 50°C
	-20°C ~ 60°C
	5% to 95%
	Codabar, Code11, Code39, Code32, Interleaved 2 of 5, Industrial 2 of 5, Matrix 2 of 5, Code93, Code128, GS1-128, UPC-A, UPC-E, EAN 8, EAN 13, GS1 DataBar, RSS14, GS1 DataBar Limited, GS1 DataBar Expanded, etc.
	PDF417, Micro PDF417, QR Code, Micro QR, Data Matrix, Aztec Code
	1.5M
	IP54
	USB Cable

1D/2D Wireless (Pistol type)

Wearable

KIOSK Embedded



NBS-SL856B



NBS-FR85



NBS-8202KMD

PRODUCT SPEC

	1D/2D Wireless (Pistol type)	Wearable	KIOSK Embedded	
DATA CAPTURE	LIGHT SOURCE	Aiming: 617 nm LED; illumination : 3500K LED	Red LED	
	IMAGE SIZE	640 × 480 pixels	640 × 480 pixels	
	RESOLUTION	> 2mil	4mil(Code 39, PCS 0.9)	
	SCANNING SPEED	60fps	200 times/s	
	DEPTH OF SCAN FIELD	Code 39 (20mil) : 20-370mm, Code 39 (5.13mil) : 30-120mm, PDF (6.88mil) : 10-170mm, DM (10mil): 20-170mm, UPC-A 100% (13 mil) : 20-360mm, QR (20 mil) : 0-330m	13mil EAN 13 more than 15cm	60-360mm(13mil PCS=90%)
	PRINT CONTRAST	25% minimum reflective difference	25% minimum reflective difference	15%
	INDICATOR	Buzzer, LED, Vibration	Beep, LED, Vibration	-
	SCAN MODE		Trig / Common / Continuous / Auto Sensing Mode	Manual & Automatic & Continuous
	SCAN ANGLE	Pitch ±65° Yaw 360° Roll ±60°	Pitch ±55° Yaw 360° Roll ±55°	Deflection 360° Inclination ±65° Rotation ±60°
	PHYSICAL	INTERFACE	USB, RS232, BT 5.0	Bluetooth Class 4.2 (Auto-power on), USB HID Keyboard, USB COM
WIRELESS TRANSMISSION DISTANCE		200M	Bluetooth :30 meters 2.4G:80 meters	-
MATERIALS		ABS+PC	ABS+PC	ABS+PC
DIMENSION (LxWxH)		180 x 110 x 85 mm	52 x 48 x 32 mm	21.3 X 13.5 X 11.5 mm
WEIGHT		433g(Inclu.cable)	42g(with battery)	3.3g
VOLTAGE		DC 5V ± 0.5V	DC 5V ± 0.5V	DC 3.3V
BATTERY		2600mAh	500mAh (built-in); Max 14000 scan /full charge	-
TFT COLOR SCREEN		-	YES	-
CPU		ARM 32	ARM 32	ARM 32
FLASH MEMORY		600KB	16M	-
ENVIRONMENTAL	AMBIENT LIGHT	100,000 Lux	0-80000LUX	0-5000Lux (fluorescence), 0-100,000 Lux (sunlight)
	WORKING CURRENT	350mA	160mA	178mA
	STAND-BY CURRENT	110mA	20uA	< 1uA
	TEMPERATURE (OPERATING)	0° to 50° C	-10°C ~ 50°C	-10°C ~ 50°C
	TEMPERATURE (STORAGE)	-40° to 70° C	-10°C ~ 50°C	-20°C ~ 60°C
	HUMIDITY	0% to 95%	5% to 95%	5% to 95%
	DECODING CAPABILITY	1D Codabar, Code11, Code39, Code32, Interleaved 2 of 5, Industrial 2 of 5, Matrix 2 of 5, Code93, Code128, GS1-128, UPC-A, UPC-E, EAN 8, EAN 13, GS1 DataBar, RSS14, GS1 DataBar Limited, GS1 DataBar Expanded, etc.	2D Codabar, Code11, Code39, Code32, Interleaved 2 of 5, Industrial 2 of 5, Matrix 2 of 5, Code93, Code128, GS1-128, UPC-A, UPC-E, EAN 8, EAN 13, GS1 DataBar, RSS14, GS1 DataBar Limited, GS1 DataBar Expanded, etc.	2D Codabar, Code11, Code39, Code32, Interleaved 2 of 5, Industrial 2 of 5, Matrix 2 of 5, Code93, Code128, GS1-128, UPC-A, UPC-E, EAN 8, EAN 13, GS1 DataBar, RSS14, GS1 DataBar Limited, GS1 DataBar Expanded, etc.
	DROP	1.5M	1.5M	1.5M
	IP	-	IP42	-
	ACCESSORY	STANDARD USB Cable	USB cable (type C)	Flat Cable



# Cash Drawer

## SEWOO Scanners offer fast performance and quality imaging.

SEWOO Cash Drawer ensures secure, efficient cash management with POS integration.

SEWOO Cash Drawer offers secure and efficient cash management across various industries, from retail and hospitality to service businesses.

Seamlessly integrated with POS systems, it ensures fast and accurate transactions, while its durable build and advanced security features minimize risks of theft and loss.

- Accurate Reconciliation: Organized cash and coin compartments reduce transaction errors.
- Ease of Use: Intuitive and quick operation for an efficient payment process.
- Maximum Reliability: Robust design and locking mechanisms for enhanced security.

Upgrade your business operations with Cash Drawer, the indispensable tool for managing cash in any setting!

### Application



Retail



Supermarkets



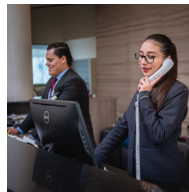
Restaurant



Pharmacy



Transportation



Hospitality



Entertainment



Public Offices

### Cash Drawer



S330E



S415H

### PRODUCT SPEC

CASH DRAWER CHARACTERISTICS	COLOR	Black / Ivory or customization
	BILL TRAY/COIN TRAY	4 Bill + 8 Coin One part bill tray can removable
	BILL LENGTH	171mm
	BILL WIDTH	Fixed as : 78/73/73/70
	BILL HOLDERS	Metal Wire Gripper
	CASING	Robust all steel construction
	INNER DRAWER	ABS plastic drawer
	MEDIA SLOT	Plastic panel, one media slot
	ROLLERS	Heavy duty plastic rollers
	KEY LOCK	Three-position Key Lock (2keys)
	SOLENOID	24V Compatible
EMERGENCY OPENER	Optional	
PHYSICAL CHARACTERISTICS	DIMENSION	335 x 368 x 80 (mm)
	WEIGHT	Net weight : 3.6kg
INTERFACES	I/O INTERFACE	RJ12 as Standard

### PRODUCT SPEC

PERFORMANCE CHARACTERISTICS	COLOR	Black/White/Gray
	BILL TRAY/COIN TRAY	4 Bill + 8 Coin
	INNER DRAWER	Plastic
	BILL HOLDERS	Metal Wire Gripper
	ROLLERS	Heavy Duty Plastic Rollers
	MEDIA SLOT	Single Slot / Double Slot
	MICRO SWITCH/SENSOR	Open by driver signal to the solenoid (optional)
	CABLE CONNECTION	External Cable on Rear / Bottom (optional)
	EMERGENCY OPNER	Emergent Release Lever on The Chassis
	CABLE LENGTH	1.1 Meters
	SOLENOID	24V Compatible
PHYSICAL CHARACTERISTICS	DIMENSION	410 x 415 x 100 (mm)
	CASH TRAY DIMENSION	475 x 460 x 170 (mm)
	BILL TRAY DIMENSION	345 x 186 x 59 (mm)
	COIN TRAY DIMENSION	345 x 125 x 40.5 (mm)
WEIGHT	5.2kg	
INTERFACES	I/O INTERFACE	Standard : RJ12 Optional : USB

COLOR	Black/White/Gray
BILL TRAY/COIN TRAY	4 Bill + 8 Coin
INNER DRAWER	Plastic
BILL HOLDERS	Metal Wire Gripper
ROLLERS	Heavy Duty Plastic Rollers
MEDIA SLOT	Single Slot / Double Slot
MICRO SWITCH/SENSOR	Open by driver signal to the solenoid (optional)
CABLE CONNECTION	External Cable on Rear / Bottom (optional)
EMERGENCY OPNER	Emergent Release Lever on The Chassis
CABLE LENGTH	1.1 Meters
SOLENOID	24V Compatible
DIMENSION	410 x 415 x 100 (mm)
CASH TRAY DIMENSION	475 x 460 x 170 (mm)
BILL TRAY DIMENSION	345 x 186 x 59 (mm)
COIN TRAY DIMENSION	345 x 125 x 40.5 (mm)
WEIGHT	5.2kg
I/O INTERFACE	Standard : RJ12 Optional : USB









Copyright © 2024 Aroot Co., Ltd. All right reserved.  
All specifications and designs are subject to change without notice.

12/2024  
[www.miniprinter.com](http://www.miniprinter.com)



# sewoo

---

Aroot CO., Ltd.  
Republic of Korea [Head Office / R&D Center]  
28-6, Gajangsaneopdong-ro, Osan-si, Gyeonggi-do, 18103, Republic of Korea  
T. +82-31-8077-5000 F. +82-31-624-5310 E. [sales@miniprinter.com](mailto:sales@miniprinter.com)